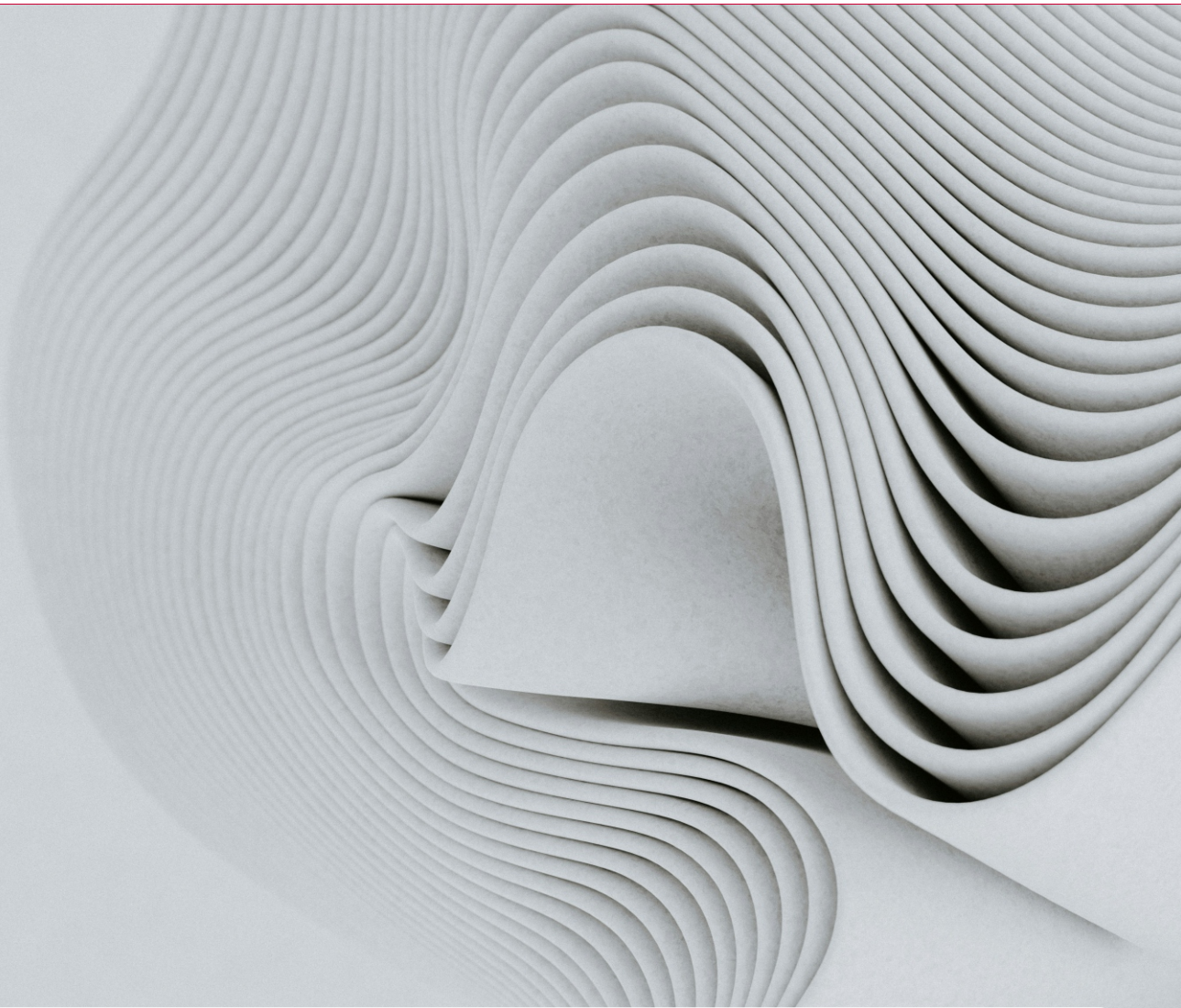


# wts taxmatrix academy



## Partners & Affiliations



wts taxmatrix



wts global

# Commercial Training

*Where tax minds shape compliance...*

| Course/ Event                    | For Who  | Overview   | Duration                     |
|----------------------------------|--|--|------------------------------|
| Executive Tax Summit             | Business Leaders, Executive Team, Entrepreneurs, Investors   | A premier gathering for discussing global tax risks, governance, opportunities and business sustenance strategies.                         | 4 days<br>Physical           |
| Annual Tax Conference            | Executives, CEOs, Managers, Accountants, Auditors, Government Officials, Tax Administrators, Business Community, Academia, Civil Society | A platform for stakeholders to discuss tax laws, policy development and administration to support business and economic growth.            | 4 days<br>Physical           |
| Tax Summer School                | Tax Return Preparers, Operational/ Technical Teams, Auditors, Consultants  | An intensive program focusing on the latest tax and accounting developments, aimed at enhancing practical skills and compliance.           | 3 days<br>Physical           |
| Payroll Tax Indaba               | Human Capital Personnel, Payroll Preparers, Tax Consultants, HR Consultants, Employers   | A forum for payroll administrators & HR consultants to ensure compliance with employment tax and labour laws.                              | 2 days<br>Physical           |
| Mastering Preparation of Returns | Tax Return Preparers, Operational/ Technical Teams, Auditors, Consultants  | A focused workshop on proficient tax preparation, including detailed computation and accurate filing of tax returns.                       | 2 days<br>Physical           |
| Executive Briefing               | Managing Directors, CEOs, Entrepreneurs, Tax Professionals, HR Personnel   | High-level, one-on-one briefings on strategic tax issues, best practices, trends, and new tax policies impacting businesses.               | 1-2 Hours<br>Physical        |
| Client-Specific Training         | Companies or Groups with Common Interests  | Customized training tailored to companies or groups specific needs, focusing on tax topics of interest to enhance compliance and planning. | 1 - 3 days<br>Physical       |
| Monthly Tax Update Webinar       | Employers, Employees, Directors, CEOs, Tax Administrators, Academia, Individuals, Civil Society, etc.                                    | Regular updates to disseminate the latest tax news and developments.   | 2-3 hours<br>Online          |
| Technical Note (Chitubu)         | Taxpayer Community, Businesses, Tax Administrators, Academia, Civil Society  | Webinar for exchanging knowledge on specific tax and accounting technical topics.  | 1 hour<br>per week<br>Online |

# Tax Faculty

*Where your aspirations meet success...*

| Professional Courses                       | Recommended for   | Overview  | Duration |
|--|---|---|----------|
| ICAZ                                       | Professional students seeking to become Chartered Accountants through ICAZ  | A course for CTA Level 2 students of the Institute of Chartered Accountants in Zimbabwe (ICAZ).   | 8 Months |
| ACCA F6                                    | Professional students studying ACCA Zimbabwe tax variant  | A course for ACCA students focusing on the Zimbabwean Tax Variant.  | 4 Months |
| Advanced International Tax (ADIT)          | Prospective Tax Professionals and Tax Professionals seeking a qualification in International Tax and Transfer Pricing   | An advanced course on international tax and transfer pricing qualification of the Chartered Institute of Taxation.  | 6 Months |
| Module-Based Short Courses (Hybrid)        |   |   |          |
| Payroll Tax and Administration (PTA)       | Payroll Administrators, Employers of Record, Representative Employees, Payroll Service Providers, Tax Personnel, Advisors   | A practical course on managing employment tax and related matters, offered by WTS Tax Matrix Academy.   | 4 Weeks  |
| Preparing Tax Returns (PTR)                | Consultants, Tax Personnel, In-House Tax Personnel, Accounting Personnel, Auditors, Business Owners   | A course on mastering the preparation and filing of tax returns, offered by WTS Tax Matrix Academy.   | 6 Weeks  |
| Managing Tax Practice - Basic (MTPB)       | Prospective Tax Professionals, Tax Associates, Junior and Senior Tax Consultants, Accounting Personnel, Auditors, In-House Tax Personnel, Independent Consultants.                                | A basic course on direct taxes, covering corporate tax, estate duty, and capital gains tax principles and practices, offered by WTS Tax Matrix Academy.     | 8 Weeks  |
| Managing Tax Practice - Advanced (MTPA)    | Prospective Tax Managers, Directors, Partners, Advisors, Independent Consultants, Tax Administrators, In-House Tax Personnel, Accounting Personnel, Auditors, Business Owners.                    | An advanced course on direct taxes, covering corporate tax, estate duty, and capital gains tax principles and practices, offered by WTS Tax Matrix Academy. | 10 Weeks |
| Value-Added Tax Practice (VATP)            | Prospective Tax Professionals, Tax Managers, Directors, Partners, Advisors, Independent Consultants, Tax Administrators, In-House Tax Personnel, Accounting Personnel, Auditors, Business Owners. | A course on Zimbabwean Value Added Tax (VAT) principles and practices, offered by WTS Tax Matrix Academy.   | 12 Weeks |
| Accounting for Tax in Financial Statements | Accountants, Finance Managers, Directors, CFOs, Business Owners, Tax Personnel, Advisors, Auditors  | A course on handling transactions related to an entity's tax burden and their disclosure in financial statements, offered by WTS Tax Matrix Academy.        | 12 Weeks |

**For more information or enquiries contact:**

Mutsawashe +263 77 879 4220 | Mutsawashe.Muzamhindo@taxmatrix.co.zw

Fadzai +263 779 210 346 | +263 782 802 384 | fadzai@taxmatrix.co.zw



[www.matrixtaxschool.co.zw](http://www.matrixtaxschool.co.zw)



4 Church Road, Avondale, Harare